

PARTS CATALOGUE



SKYTEAM

ST50 ST90



SKY TEAM CORPORATION LTD.

RM 503 CARNIVAL COMMERCIAL BLDG.
18 JAVA ROAD NORTH POINT HONGKONG

TEL:00852 25089428

FAX:00852 25089478

EMAIL:SKYTEAM_HK@163.COM

FOREWARD

WE COMPILED THIS MOTORCYCLE'S PARTS CATALOGUE IN ORDER TO MAKE BETTER UNDERSTANDING OF THE SKYTEAM ST125(TR/SM/OF) MOTORCYCLE FOR THE USERS.

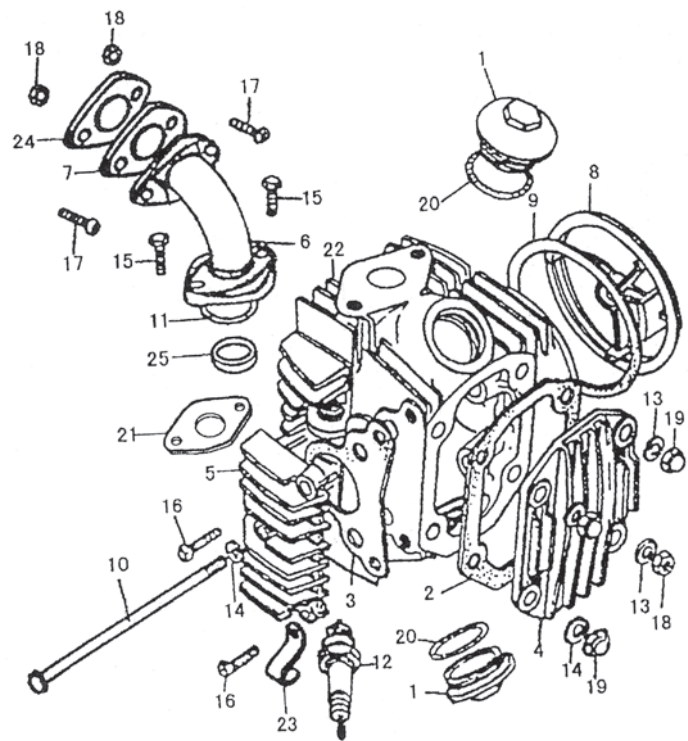
IN THE OF THE MOTORCYCLE AND PURCHASE OF ITS PARTS AND COMPONENTS, WE PCOMMEND YOU TO USE AS FAR AS POSSIBLE THE PARTS NUMBER AND DESCRIPTION IN THIS PARTS CATALOGUE SO THAT WE CAN PROVIDE YOU WITH TIMELY AND SATISFACTORY SERVICE.

SOME MODIFICATIONS SHOULD BE MADE TO THE PARTS AND COMPONENTS LISTED IN THIS CATALOGUE WITHOUT NOTICE IN THE COURSE OF LATER PRODUCTION. PLEASE PAY ATTENTION TO THESE MODIFICATIONS.



SKYTEAM ST50 ST90

PARTS CATALOGUE

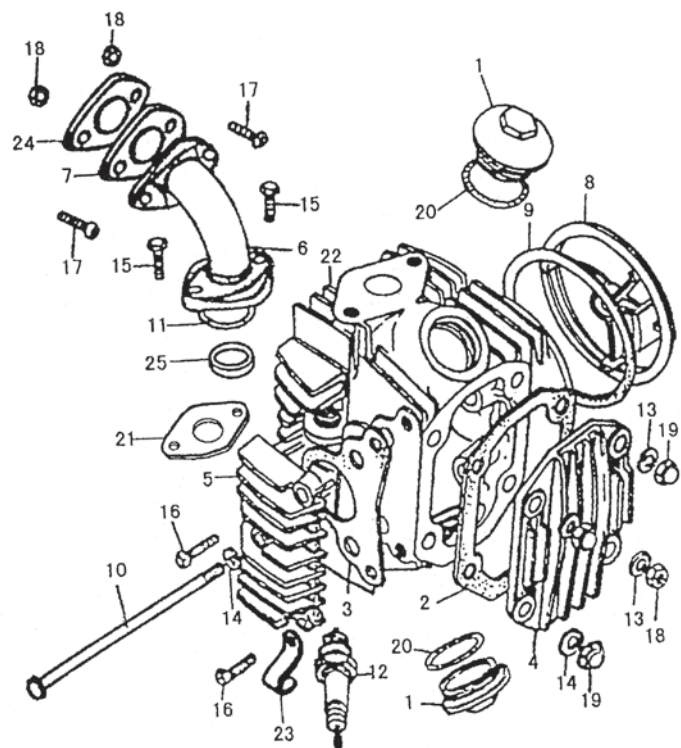


ĐI	Đ	Đ	Đ	Đ
1	100003	SCREW COVER	Đ	2
2	100004	GASKET	Đ	1
3	147FM2B-0010C	CYLINDER HEAD COVER, RH GASKET	Đ, Đ, Đ, Đ, Đ	1
4	10007	CYLINDER HEAD COVER	Đ, Đ, Đ	1
5	147FM2B-0020	CYLINDER HEAD COVER, RH	Đ, Đ, Đ, Đ, Đ	1
6-1	139FM-2-0007(50 ĐÍ)	PIPE.in	Đ	1
6-2	13111-04EC(90 ĐÍ)	PIPE.in	Đ	1
7-1	110603-J21(50 ĐÍ)	INSULATOR	Đ	1
7-2	13113-04E(90 ĐÍ)	INSULATOR	Đ	1
8-1	100011B	SPROCKET WHEEL COVER	Đ	1
8-2	100011	SPROCKET WHEEL COVER	Đ	1
9	100012C	GASKET	Đ	1
10	100047	BOLT	Đ	1
11-1	7D17-J7-28-2(50 ĐÍ)	O-RING	O Đ	1
12	220600	SPARK PLUG	Đ	1
13	GB97.1-85 6-140HV-Zn.D	WASHER	Đ	3
14-13	GB97.1-85-6-T3-Y(50; 90 ĐÍ)	SEALING WASHER	Đ	2
15-1	M6 ; Đ20-Zn.D GB758386(50 ĐÍ)	HEX BOLT	Đ	2
15-2	09139-06092(90 ĐÍ)	BOLT	Đ	2
16-1	M6 ; Đ18 HwMHWZn	HEX BOLT	Đ	2
16-2	7DM28-6 ; Đ18(90 ĐÍ)	HEX BOLT	Đ	2
17-1	GB823-88 M6 ; Đ20(50 ĐÍ)	HEX BOLT	Đ	2
17-2	GB5781-86 M6 ; Đ20-Zn.D(90 ĐÍ)	HEX BOLT	Đ	2
18-12	GB6170-86 M6-8-Zn.D(50 ĐÍ)	NUT	Đ	2
19-12	M6 GB923-76-8-Cr(50 ĐÍ)	CAP NUT	Đ	3



SkyTEAM ST50 ST90

PARTS CATALOGUE

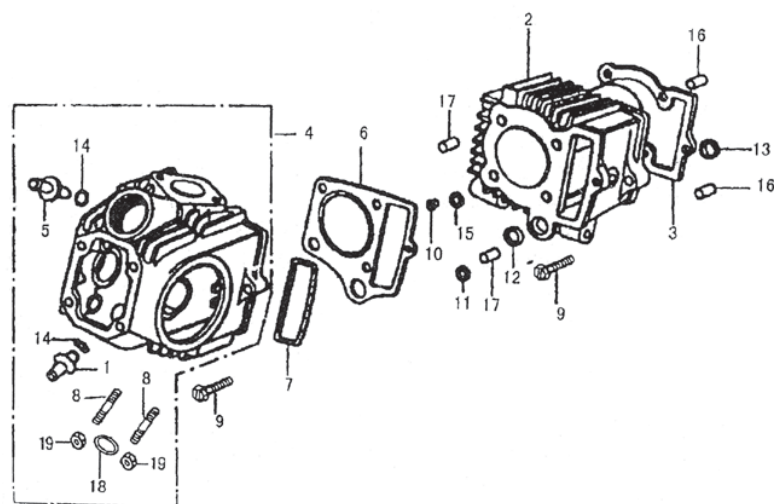


ĐỒ	ĐỒ	ĐỒ	ĐỒ	ĐỒ
19-2	GB923-88 M-68-Cr (90 ĐÍ)	CAP NUT	ĐỒ	3
20	7D17-J7-23-3	O-RING	ĐỒ	2
21-1	110602C(50 ĐÍ)	WASHER	ĐỒ	1
21-2	100081GC(90 ĐÍ)	WASHER	ĐỒ	1
22-1	100101C(50 ĐÍ)	CYLINDER HEAD	ĐỒ	1
23	100049	CLIP	ĐỒ	1
24-2	13112-04EC(90 ĐÍ)	GASKET	ĐỒ	1
25-2	13111-04EC(90 ĐÍ)	PUSHING	ĐỒ	1



SKYTEAM ST50 ST90

PARTS CATALOGUE

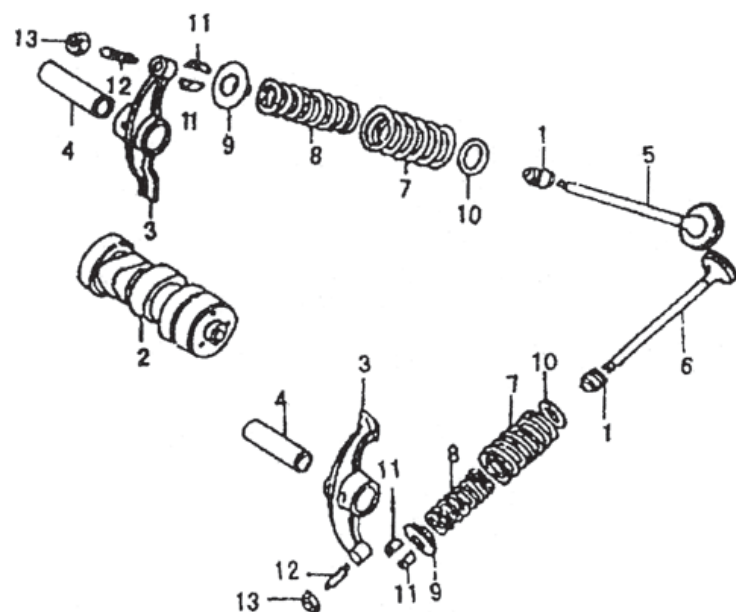


№	Код	Наименование	Единица измерения	Кол-во
1	147FM2B-1104	Головка, в, калва	шт.	1
2-1	100001C(50 ДІ)	ЦИЛИНДР	шт.	1
2-2	11211-04EC(90 ДІ)	ЦИЛИНДР	шт.	1
3	100033C	ГАЗЕТ	шт.	1
4-1	100102D(50 ДІ)	ЦИЛИНДР ГОЛД АСС	шт.	1
4-2 2	147F1B-1100(90 ДІ)	ЦИЛИНДР ГОЛД АСС	шт.	1
5	147FM2B-1106	Головка, в, калва	шт.	1
6-1	139FM-3000C(50 ДІ)	ЦИЛИНДР ГОЛД ГАЗЕТ АСС	шт.	1
6-1	139FM2B-0110C(90 ДІ)	ЦИЛИНДР ГОЛД ГАЗЕТ АСС	шт.	1
7	147FM2B-0120	СЕЛ РІНГ	шт.	1
8	01421-06168	БОЛТ	шт.	2
9	M 6 ; А22 GB29-76-Zn.D	HEX BOLT	шт.	2
10	147FM2B-0006	БУШІНГ	шт.	1
11	147FM2B-0005	ВАСHER	шт.	1
12	147FM2B-0004	РУБBER GASKET	шт.	1
13	100025	КОЛЛАР	шт.	1
14	147FM2B-1105	РІНГ	шт.	1
15	100024	КОЛЛАР	шт.	1
16	100027	DOVEL PIN	шт.	2
17	100028	DOVEL PIN	шт.	2
18	147F1B-1110	ГАЗЕТ	шт.	1
19	GB6170-86 M6-8-Zn.D	NU T	шт.	2



SKYTEAM ST50 ST90

PARTS CATALOGUE



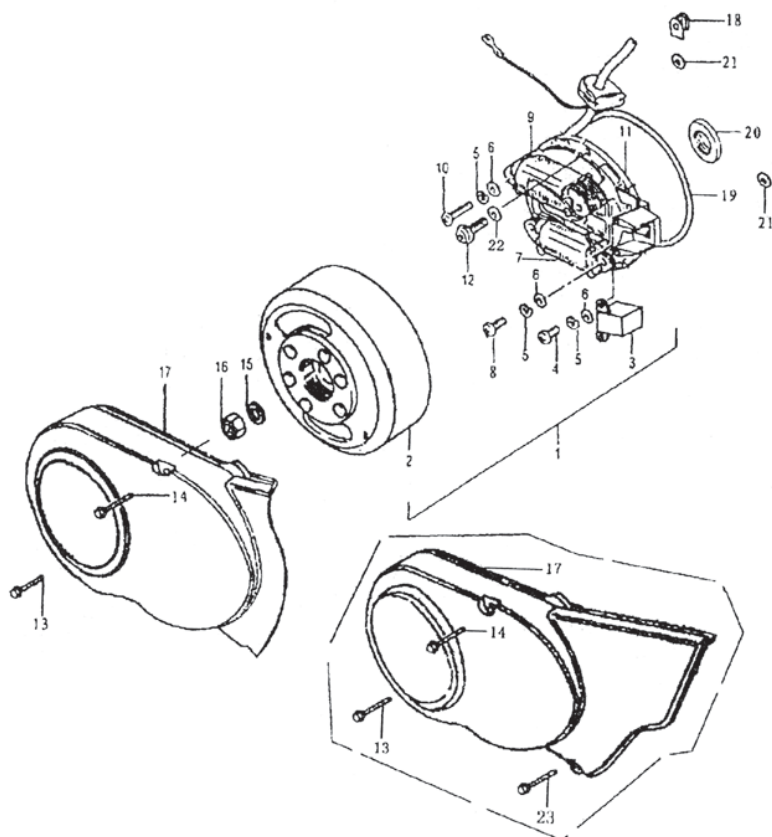
№	№	Описание	Описание	№
1	147FM2B-1300	OIL HOCD COMP	147FM2B-1300	2
2	147FM2B-1200	CAM SHAFT	147FM2B-1200	1
3	10018	ARM	10018	2
4	100106	ARM SHAFT	100106	2
5	147FM2B-1005	VALVE intake	147FM2B-1005	1
6	147FM2B-1400	VALVE exhaust	147FM2B-1400	1
7	147FM2B-1003	SPRING	147FM2B-1003	2
8	147FM2B-10004	SPRING	147FM2B-10004	2
9	147FM2B-1001	RETAINER valve spring	147FM2B-1001	2
10	147FM2B-1006	RETAINER valve spring	147FM2B-1006	2
11	147FM2B-1002	COTTER Valve	147FM2B-1002	4
12	100107	SCREW adjusting	100107	2
13	147FM2C-1001	NUT adjustong	147FM2C-1001	2



SKYTEAM

ST50 ST90

PARTS CATALOGUE

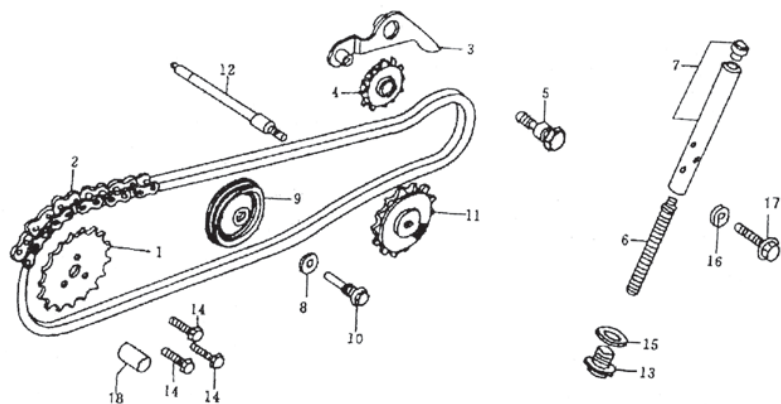


ĐƠN VỊ	QUY CÁCH	TÊN DỤNG CỤ	ĐƠN VỊ	QUY CÁCH
1	240000B	MAGNETO ASSY	1	1
2-1 2	230030C	ROTOR, flywheel	11	11
3-1 2	230050	RIGGER	1	1
4-1 2	GB823 M4 ; Á12	SCREW	2	2
5-1 2	GB93 4	LOCK WASHER	6	6
6-1 2	Gb848 4	WASHER	6	6
7-1 2	230020C	COIL, primary	1	1
8-1 2	GB823 M4 ; Á15	SCREW	2	2
9-1 2	230010C	COIL, lighting	1	1
10-1 2	GB823 M4 ; Á25	SCREW	2	2
11-1 2	230040C	SOLE PLATE, STATOR	1	1
12	GB819-82 M6 ; Á16-Zn.D	SCREW	2	2
13-1 2	M6 ; Á20HwMHWZn	BOLT	1	1
14-1 2	M6 ; Á35HwMHWZn	BOLT	1	1
15-1 2	GB97.1-85 10-140HV-Zn.D	WASHER	1	1
16-1 2	GB6171-86 10 ; Á1.25-6-Zn.D	NUT	1	1
17-1	140013B(50 ĐÍ)	COVER(L)	1	1
17-2	140013(90 ĐÍ)	COVER(L)	1	1
18-1 2	100022	HOLDER, cushion	1	1
19-1 2	7D17-J7-105-2	O-RING	1	1
20-1 2	100052	OIL SEAL	1	1
21-1 2	7D17-J7-6-1.7	O-RING	2	2
23-2	GB818-76 M6 ; Á28(90 ĐÍ)	BOLT	1	1



SKYTEAM ST50 ST90

PARTS CATALOGUE

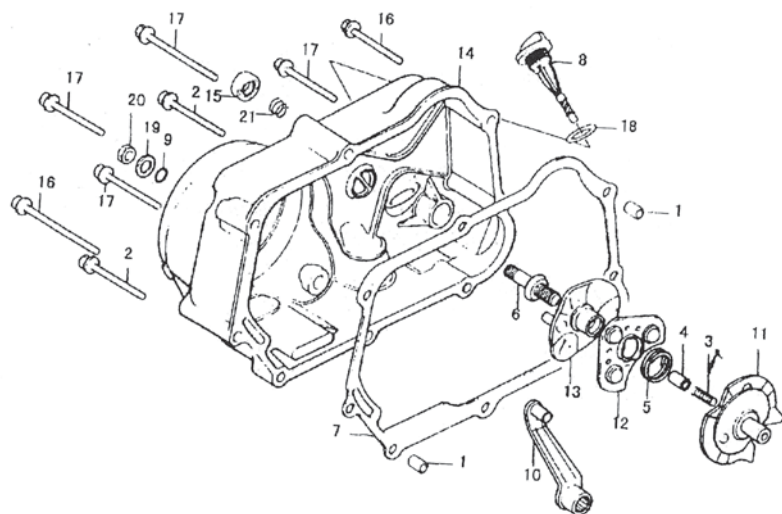


№	Код	Наименование	Код	Кол-во
1	147M2B-0003	TIMMING DRIVEN SPRIVEN SPROCKET	147M2B-0003	1
2-1	100046(50 ДІ)	1/4; CHAIN	100046	1
2-2	100046B(90 ДІ)	1/4; CHAIN	100046B	1
3	100039	ROD COMP	100039	1
4	100016	CAM CHAIN TENSIONED ROLLER	100016	1
5	100044	SCREW	100044	1
6	100045A	SPRING	100045A	1
7	100041A	ROD COMP	100041A	1
8-1	8 GB848-76 L6-M(50 ДІ)	WASHER	8 GB848-76	1
8-2	GB848-85 8-L6-M(90 ДІ)	WASHER	GB848-85	1
9	100015	ROLLER COMP	100015	1
10	100040	PIN	100040	1
11	100017	SPROCKET	100017	1
12	147FM2B-0007	OIL PUMP SPROCKET STINDLE	147FM2B-0007	1
13	100036A	SEALING BOLT	100036A	1
14-1	M5-2 ; Á12 GB30-76.6.6-Y(50 ДІ)	BOLT	M5-2 ; Á12 GB30-76.6.6-Y(50 ДІ)	2
14-2	M5-2 ; Á12 GB30-76.6.6-Y(90 ДІ)	BOLT	M5-2 ; Á12 GB30-76.6.6-Y(90 ДІ)	3
15	147FM2B-0012	WASHER	147FM2B-0012	1
16-1	6GB97-76 L6-M(50 ДІ)	WASHER	6GB97-76	1
16-2	GB97.1-85 6-L6-M(90 ДІ)	WASHER	GB97.1-85	1
17-1	GB5783-86 M6 ; Á12-8.8-Zn.D(50 ДІ)	BOLT	GB5783-86 M6 ; Á12-8.8-Zn.D(50 ДІ)	1
17-2	GB5783-86 M6 ; Á12-12-Zn.D(90 ДІ)	BOLT	GB5783-86 M6 ; Á12-12-Zn.D(90 ДІ)	1



SKYTEAM ST50 ST90

PARTS CATALOGUE

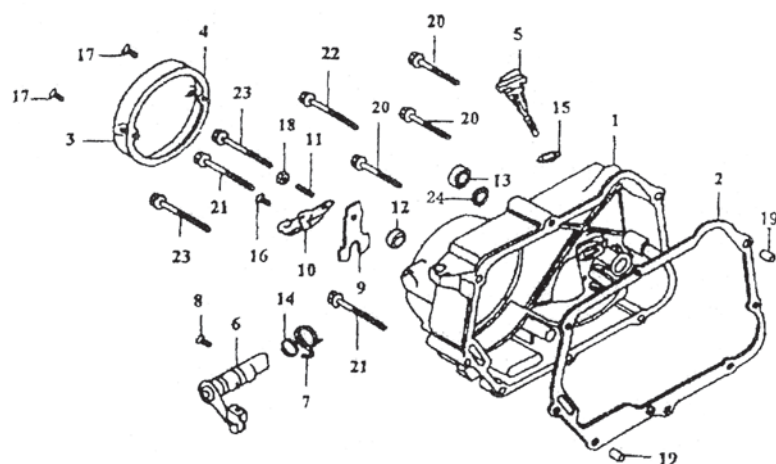


№	Код	Наименование	Код	№
1	100027	DOWEL PIN	100027	2
2-1	M 6 ; A65 HwMHWZn (50 ДІ)	SCREW	A65 HwMHWZn	2
3	130013	SPRING	130013	1
4	130014	ROTART BODY CENTER BUSH	130014	1
5	130015	SPRING	130015	1
6	130016	SCREW	130016	1
7	130017C	R.CASE COVER GASKET	130017C	1
8	130018	OIL LEVER	130018	1
9	130022	GAUGE	130022	1
10	130500	LEVER COMP	130500	1
11	130600	LEVER AND ROTARY BODY COMP	130600	1
12	130700	BALL-RACE COMP	130700	1
13	130800	SUPPORT COMP, ROTARY BODY	130800	1
14	130900	R, CASE COVER COMP	130900	1
15	130100	OIL SEAL	130100	1
16-1	M 6 ; A35 HwMHWZn (50 ДІ)	BOLT	A35 HwMHWZn	2
17-1	M 6 ; A40 HwMHWZn (50 ДІ)	BOLT	A40 HwMHWZn	4
18	7D17-J7-18.5-2.6	O-RING	7D17-J7-18.5-2.6	1
19	GB848-85 8-140HV-Zn.D	WASHER	GB848-85 8-140HV-Zn.D	1
20	GB6170-86 M8-8-Zn.D	NUT	GB6170-86 M8-8-Zn.D	1



SKYTEAM ST50 ST90

PARTS CATALOGUE



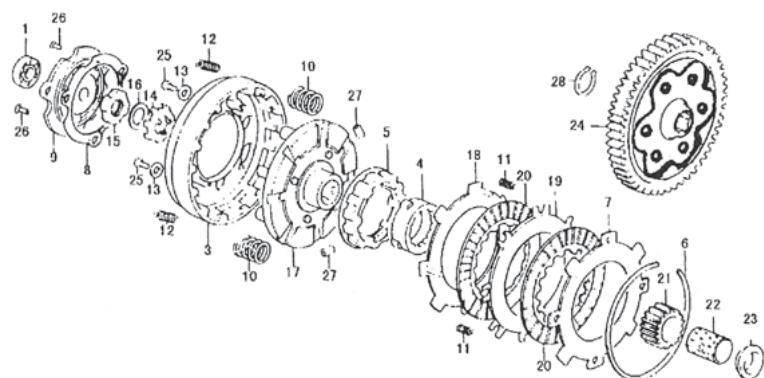
№	Код	Наименование	Код	№
1	130900G	RIGHT COVER, CRANKCASE	130900G	1
2	130017C	GASKET	130017C	1
3	130030G	COVER	130030G	1
4	130031GC	GASKET	130031GC	1
5	130018G	OIL LEVEL GAUGE	130018G	1
6	130032G	CLUTCH LEVEL COMP	130032G	1
7	130033G	RETURN SPRING	130033G	1
8	130034G	PIN	130034G	1
9	130036G	ADJUSTING PLATE, CLUTCH	130036G	1
10	130037G	LIFTER SETTING PLATE	130037G	1
11	130038G	CLUTCH ADJUSTING SCREW	130038G	1
12	130040G	OIL SEAL	130040G	1
13	131000	OIL SEAL	131000	1
14	7D17-J7-14-1.5	O-RING	7D17-J7-14-1.5	1
15	7D17-J7-18.5-2.6	O-RING	7D17-J7-18.5-2.6	1
16	GB819-85 M6 ; A16-Zn.D	SCREW	GB819-85 M6 ; A16-Zn.D	1
17	GB819-85 M5 ; A12-Zn.D	SCREW	GB819-85 M5 ; A12-Zn.D	2
18	GB170-86 M6 ; A8-Zn.D	HEX NUT	GB170-86 M6 ; A8-Zn.D	1
19	100027	DOWEL PIN	100027	2
20	7DM28-M6 ; A40	HEX BOLT	7DM28-M6 ; A40	3
21	7DM28-M6 ; A35	HEX BOLT	7DM28-M6 ; A35	2
22	7DM28-M6 ; A65	HEX BOLT	7DM28-M6 ; A65	1
23	7DM28-M6 ; A55	HEX BOLT	7DM28-M6 ; A55	2
24	100057	SPRING	100057	1



SKYTEAM

ST50 ST90

PARTS CATALOGUE



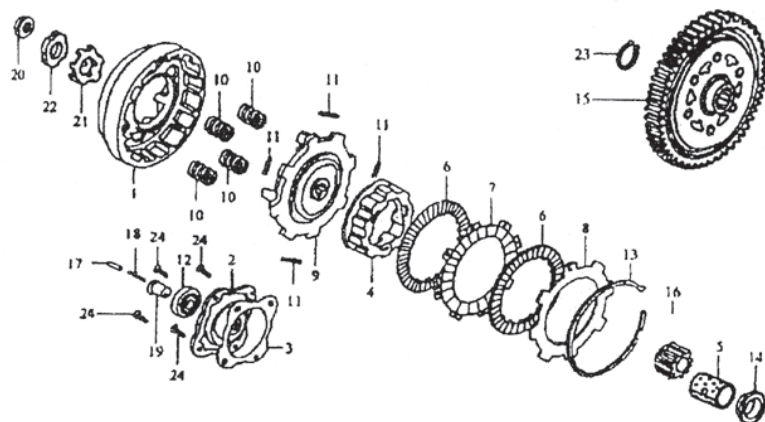
№	Код	Наименование	Единица измерения
1	100 GB276-64	Шестерня	
2-1	130000-1C	Шестерня	
3	130001	Шестерня	
4	130002	Шестерня	
5	130003	Шестерня	
6	130004	Шестерня	
7	130005	Шестерня	
8	130007	Шестерня	
9	130008	Шестерня	
10	130009	Шестерня	
11	130010	Шестерня	
12	130011	Шестерня	
13	130012	Шестерня	
14	130019	Шестерня	
15	130020	Шестерня	
16	130021	Шестерня	
17	130100	Шестерня	
18	130200	Шестерня	
19	130300A	Шестерня	
20	130400A	Шестерня	
21	140001	Шестерня	
22	140002	Шестерня	
23	140003	Шестерня	
24	140100	Шестерня	
25	M 5 ; Á10 GB818-76-35-Zn.D	Шестерня	
26	M 5 ; Á10 GB819-76-35-Zn.D	Шестерня	
27	8 ; Á10 66+3/30 GB4661-84	Шестерня	
28-1	150003	Шестерня	



SKYTEAM

ST50 ST90

PARTS CATALOGUE

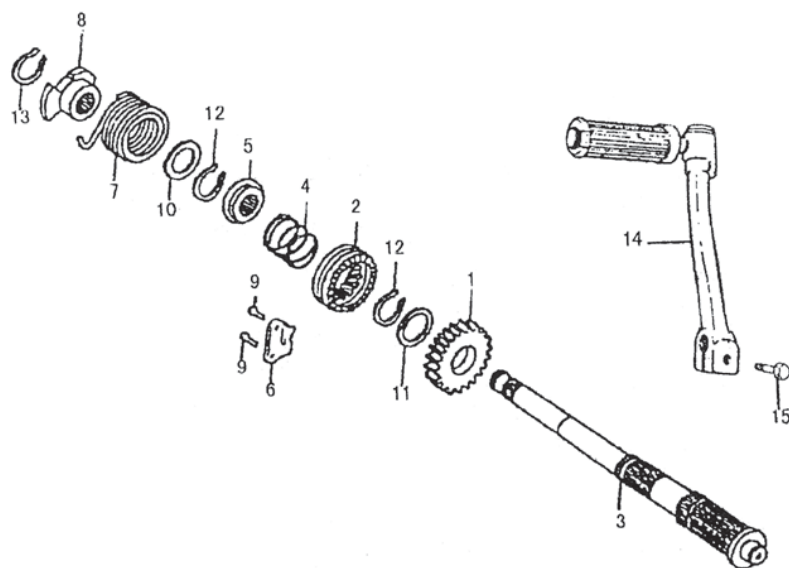


№	Код	Наименование	Код	Кол-во
1	147FM2B-6007	CLUTCH OUTER	147FM2B-6007	1
2	147FM2B-6009	COVER, CLUTCH OUTER	147FM2B-6009	1
3	147FM2B-6008C	GASKET	147FM2B-6008C	1
4	147FM2B-6001	CLUTCH CENTER	147FM2B-6001	1
5	140002	PRIMARY DRIVER GEAR GUIDE	140002	1
6	147FM2B-6100	CLUTCH FRICTION ASSY	147FM2B-6100	2
7	147FM2B-6104	OUTER DISK, CLUTCH FRICTION	147FM2B-6104	1
8	147FM2B-6102	INNER DISK, CLUTCH FRICTION	147FM2B-6102	1
9	147FM2B-6105	CLUTCH FRAME	147FM2B-6105	1
10	21201-04E	SPRING	21201-04E	4
11	147FM2B-6105	SPRING	147FM2B-6105	4
12	100GB276-82	BEARING	100GB276-82	1
13	147FM2B-6003	SET RING	147FM2B-6003	1
14	140003	COLLAR	140003	1
15	140100	GEAR, PRIMARY DRIVEN	140100	1
16	140001G	GEAR, PRIMARY DRIVE	140001G	1
17	147FM2B-6013	SLEEVE	147FM2B-6013	1
18	147FM2B-6012	SPRING	147FM2B-6012	1
19	147FM2B-6011	OIL TROUGH GUIDE	147FM2B-6011	1
20	147FM2B-6014	NUT	147FM2B-6014	1
21	147FM2B-6016	LOCK WASHER	147FM2B-6016	1
22	147FM2B-6015	SAUCER WASHER	147FM2B-6015	1
23	150003	SET RING	150003	1
24	147FM2B-6018	SCREW	147FM2B-6018	4



SkyTEAM ST50 ST90

PARTS CATALOGUE

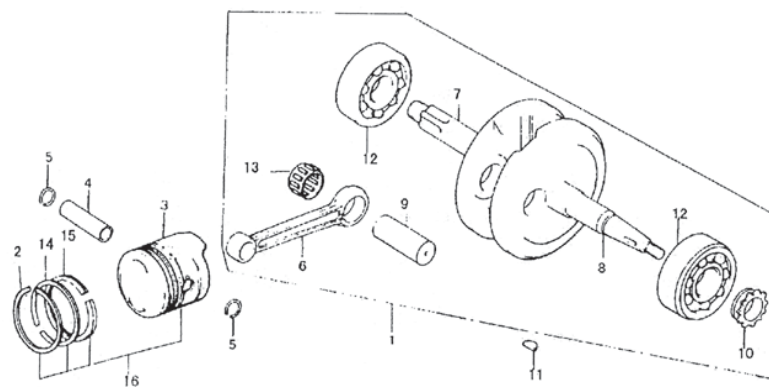


№	Код	Наименование	Кол-во
1	147FM2B-7101	GEAR, KICK STARTER DRIVE	1
2	147FM2B-7103	RATCHET, KICK STARTER	1
3	147FM2B-7101	SPINDLE, KICK STARTER	1
4	147FM2B-7104	SPRING	1
5	147FM2B-7106	SPRING BASE	1
6	147FM2B-7001	PLATE, PILOT	1
7	147FM2B-7003	SPRING BASE	1
8	147FM2B-7004	RETAINER, KICK SPRING	1
9	GB5783-86 M6 ; А20-Y	BOLT	2
10	147FM2B-7002	WASHER	1
11	147FM2B-7107	WASHER	1
12	147FM2B-7105	CIRCLP	2
13	147FM2B-7005	CIRCLP	1
14	26300-A1400	LEVER, KICK STARTER	1
15	GB5783-86 M6 ; А25-Zn.DB	BOLT	1



SKYTEAM ST50 ST90

PARTS CATALOGUE

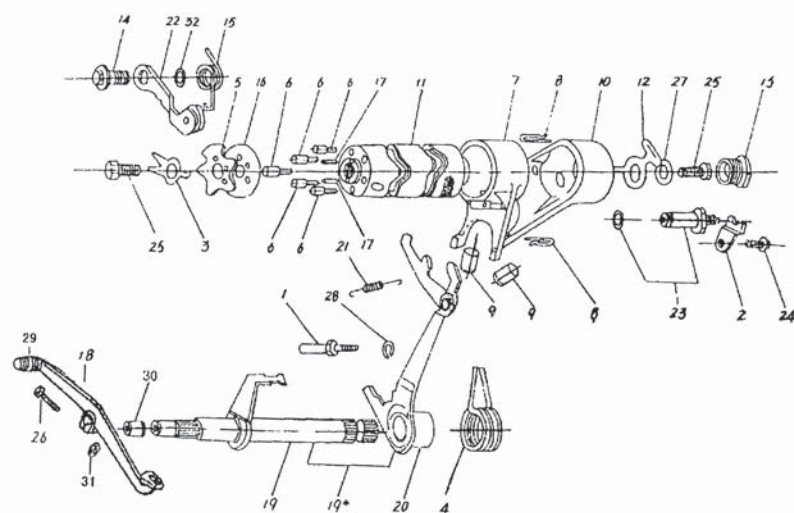


№	№	°А	NAME	NAME	№
1-1	100401(50 ДІ)		CRANKSHAFT COMP	Кр. ш. кр.	1
1-2	10001-04E(90 ДІ)		CRANKSHAFT COMP	Кр. ш. кр.	1
2-1	139FM-2001S(50 ДІ)		PISTION RING, No.1	П. к. (1 ».)	1
2-2 2	147FM2B-3002		PISTION RING, No.1	П. к. (1 ».)	1
3-1	139FM-20001S(50 ДІ)		PISTION	П.	1
3-2	147FM2B-3001(90 ДІ)		PISTION	П.	1
4-1	139FM-2005(50 ДІ)		PISTION PIN	П. п.	1
4-2	147FM2B-0001(90 ДІ)		PISTION PIN	П. п.	1
5	100404		CLIP	К.	2
6-1	100411(50 ДІ)		CONNECTING ROD	С. р.	1
6-2	122111-04E(90 ДІ)		CONNECTING ROD	С. р.	1
7-1	100414(50 ДІ)		CRANKSHAFT, RH	Кр. ш.	1
7-2	12221-04E(90 ДІ)		CRANKSHAFT, RH	Кр. ш.	1
8-1	100409(50 ДІ)		CRANKSHAFT, LH	Кр. ш.	1
8-2	12211-04E(90 ДІ)		CRANKSHAFT, LH	Кр. ш.	1
9-1	100410(50 ДІ)		CRANK PIN	Кр. п.	1
9-2	147FM2B-2002(90 ДІ)		CRANK PIN	Кр. п.	1
10	147FM2B-2004		TIMING SPROCKET	Т. ш.	1
11	100035		KEY	К.	1
12	D304 GB276-82		BEARING	Б.	2
13	9243/23.1		NEEDLE BEARING	П. б.	1
14-1	139FM-2003S(50 ДІ)		PISTION RING, No.2	П. к. (2 ».)	1
14-2	147FM2B-3003(90 ДІ)		PISTION RING, No.2	П. к. (2 ».)	1
15-1	139FM-2100S(50 ДІ)		OIL RING	П. к. (О.)	1
15-2	147FM2B-3100(90 ДІ)		OIL RING	П. к. (О.)	1
16-1	139FM-2000S(50 ДІ)		PISTON ASSY	П. к. с.	1
16-2	147FM2B-3000(90 ДІ)		PISTON ASSY	П. к. с.	1



SkyTEAM ST50 ST90

PARTS CATALOGUE

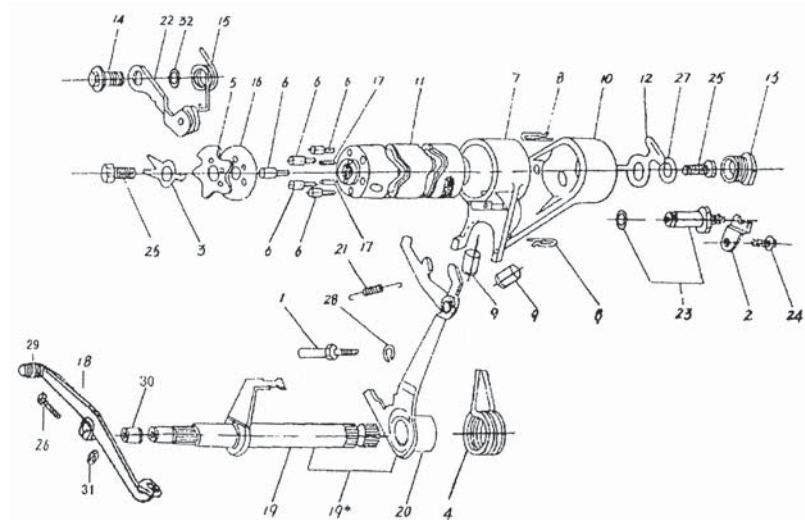


№	№	№	№	№
1	100032	LOCATING ROD	1	1
2	100051	CLIP	1	1
3-1	6GB1024-76-Y(50 ДІ)	WASHER	1	1
3-2	7DM44-6-Y(90 ДІ)	WASHER	1	1
4	140015	SPRING RETURN	1	1
5-1	140016(50 ДІ)	PLATE POSITION	1	1
5-2	14016G(90 ДІ)	PLATE POSITION	1	1
6	140017	PIN	1	1
7-1	140018(50 ДІ)	FRONT FORK,GEAR SHIFTING	1	1
7-2	140018(90 ДІ)	FRONT FORK,GEAR SHIFTING	1	1
8	140019	CLIP	2	2
9	140020	PIN	2	2
10	140021	REAR FORK,GEAR SHIFTING	1	1
11-1	140022(50 ДІ)	DRUM,GEAR SHIFTING	1	1
11-2	140022G(90 ДІ)	DRUM,GEAR SHIFTING	1	1
12	140023	PLATE,SWICH	1	1
13	140024	PLUG	1	1
14	140026	SCREW	1	1
15	140028	SPRING RETURN	1	1
17-1	140042G(50 ДІ)	DOWEL PIN	1	1
18-1	25610--A0300(50 ДІ)	SHIFT PEDAL ASSY	1	1
18-2	140300(90 ДІ)	SHIFT PEDAL ASSY	1	1
19-1	140400(50 ДІ)	SHIFT GEAR SHIFTING	1	1
19-2	140400G(90 ДІ)	SHIFT GEAR SHIFTING	1	1
20-1	140500(50 ДІ)	ARM ASSY	1	1
21	140505	SPRING	1	1
22	140600	ARM ASSY,POSITION	1	1
23	221700	SWITCH,NEUTRAL	1	1

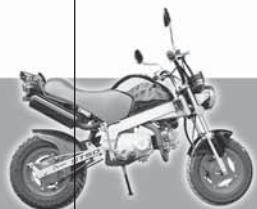


SKYTEAM ST50 ST90

PARTS CATALOGUE

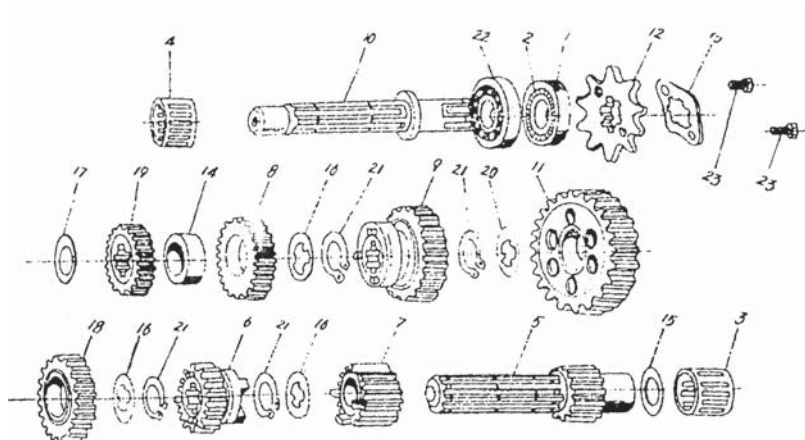


Đã	Đp	°Á	ÖTÁÖE	ÖTÁÖE	ÖE
24-1	GB823-85	M6 ; Á10-Zn.D(50 ĐÍ)	SCREW	ÖÖÖÖÁÁÁÁ	1
24-2	GB818-85M6	; Á10-Zn.D(90 ĐÍ)	SCREW	ÖÖÖÖÁÁÁÁ	1
25	HB1-201	M6 ; Á18-0	BOLT	ÁÁÁÁÁÁ	1
26-1	GB5783-86	M6 ; Á25-Zn.DB(50 ĐÍ)	BOLT	ÁÁÁÁÁÁ	1
26-2	GB5783-86	M6 ; Á16-Zn.DB(90 ĐÍ)	BOLT	ÁÁÁÁÁÁ	1
27	GB96-85	6-140HV-Zn.D	WASHER	ÁÁÁÁ	1
29	25652-16500		SHIFT ROD BUSHING	ÁÁÁÁÁÁÁÁ	1
30-2	140041G(90 ĐÍ)		BUSHING	ÁÁÁÁ	1
31-1	GB6170-86	M6-Zn.DB(50 ĐÍ)	NUT	ÁÁÁÁ	1
32-1	180015-J22(50 ĐÍ)		WASHER	ÁÁÁÁ	1



SKYTEAM ST50 ST90

PARTS CATALOGUE

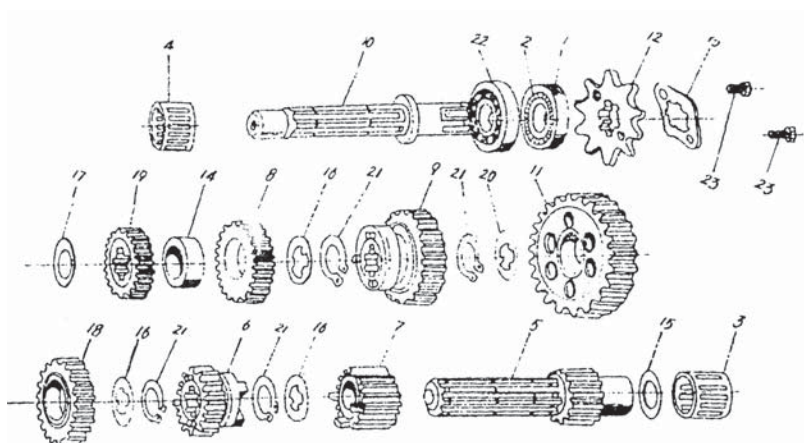


№	Код	Наименование	Кол-во
1	100019	OIL SEAL	1
2-2	100020(90 ДІ)	SPRING	1
3-1	101005(37941/14 GB290-82)(50 ДІ)	BEARING	1
3-2	101005(90 ДІ)	BEARING	1
4-1	101006(7949/13.5 GB290-82)(50 ДІ)	BEARING	1
4-2	101006(90 ДІ)	BEARING	1
5-1	14004(50 ДІ)	TRANSMISSION MAIN SHAFT	1
5-2	14004G(90 ДІ)	TRANSMISSION MAIN SHAFT	1
6-1	14005(50 ДІ)	MAIN SHAFT THIRD GEAR	1
6-2	14005G(90 ДІ)	MAIN SHAFT THIRD GEAR	1
7	140006G	MAIN SHAFT SECOND GEAR	1
8	140007	COUNTERSHAFT THIRD GEAR	1
9-1	140008(50 ДІ)	COUNTERSHAFT SECOND GEAR	1
9-2	140008G(90 ДІ)	COUNTERSHAFT SECOND GEAR	1
10-1	140009(50 ДІ)	COUNTERSHAFT	1
10-2	140009G(90 ДІ)	COUNTERSHAFT	1
11	140010	COUNTERSHAFT GEAR	1
12-1	70-1060001(50 ДІ)	SPROCKET	1
12-2	140011G(90 ДІ)	SPROCKET	1
13	140012	STOPPER PLATE	1
14-1	140025(50 ДІ)	WASHER	1
14-2	140025G(90 ДІ)	WASHER	1
15	140029	WASHER	1
16-1	140034(50 ДІ)	WASHER	2
16-2	140034(90 ДІ)	WASHER	3
17	140032G	WASHER	1
18-2	140034G(90 ДІ)	MAIN SHAFT FORTH GEAR	1



SkyTEAM ST50 ST90

PARTS CATALOGUE

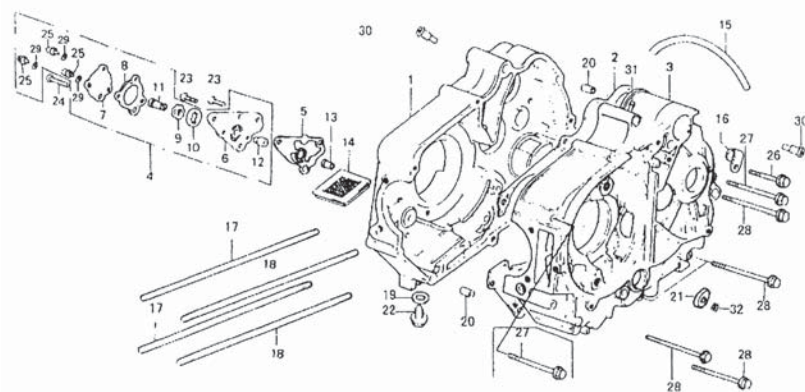


№	№	№	№	№
19-2	140035G(90 ЁЇ)	COUNTERSHAFT FORTH GEAR	140035G(90 ЁЇ)	1
20	140030	WASHER	140030	1
21-1	150003(50 ЁЇ)	CLIP	150003(50 ЁЇ)	2
21-2	150003(90 ЁЇ)	CLIP	150003(90 ЁЇ)	4
22-1	F203 GB276-64(50 ЁЇ)	BEARING	F203 GB276-64(50 ЁЇ)	2
22-2	F203 GB276-82(90 ЁЇ)	BEARING	F203 GB276-82(90 ЁЇ)	2
23	GB5783-86 M6 ;А8-Zn.DB	BOLT	GB5783-86 M6 ;А8-Zn.DB	2



SKYTEAM ST50 ST90

PARTS CATALOGUE



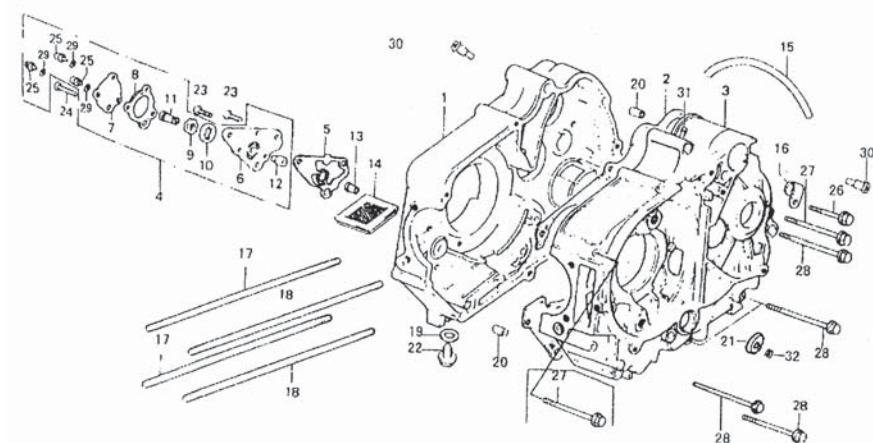
ĐI	ĐI	ĐI	ĐI	ĐI
1	101102C	CRANKCASE COMP, RH	ĐI	1
2	100006C	GASKET	ĐI	1
3-1	101002C(50 ĐÍ)	CRANKCASE COMP, LH	ĐI	1
3-2	147F1B-4210(90 ĐÍ)	CRANKCASE COMP, LH	ĐI	1
4	147FM2B-5000	OIL PUMP ASSY	ĐI	1
5	147FM2B-0009	OIL PUMP BODY GASKET	ĐI	1
6	147FM2B-5101	OIL PUMP BODY	ĐI	1
7	147FM2B-5002	OIL PUMP COVER GASKET	ĐI	1
8	147FM2B-5003	OIL PUMP INNER ROTOR	ĐI	1
9	147FM2B-5004	OIL PUMP OUTER ROTOR	ĐI	1
10	147FM2B-5005	OIL PUMP DRIVE SHAFT	ĐI	1
11	147FM2B-5001	OIL PUMP SHAFT	ĐI	1
12	147FM2B-5102	OIL PUMP SHAFT BUSH	ĐI	1
13-2	147FM2B-0008(90 ĐÍ)	OIL PUMP SPROCKETSHAFT BUSH	ĐI	1
14	100034	OIL FIRTER SCREEN	ĐI	1
15	100031	BREATHER TUBE	ĐI	1
16	100048	TUBE	ĐI	1
17-1	101107(50 ĐÍ)	BOLT	ĐI	2
17-2	11361-04E(90 ĐÍ)	BOLT	ĐI	2
18-1	101107(50 ĐÍ)	BOLT	ĐI	2
18-2	11362-04E(90 ĐÍ)	BOLT	ĐI	2
19	12GB848-76 L6-M	SMALL WASHER	ĐI	1
20	100026	DOWER PIN	ĐI	2
21	100018	OIL SEAL	ĐI	1
22	100013	SCREW COVER	ĐI	1
23	GB818-85 M6 ; Á16-Zn.D	SCREW	ĐI	2
24-1 2	M 6 ; Á22 GB818-76-Zn.D(50 ; 90 ĐÍ)	SCREW	ĐI	1
25	GB818-85 M5 ; Á10-Zn.D	SCREW	ĐI	3
26-1	7DM28-M6 ; Á50(50 ĐÍ)	BOLT	ĐI	1



SKYTEAM ST50 ST90

PARTS CATALOGUE

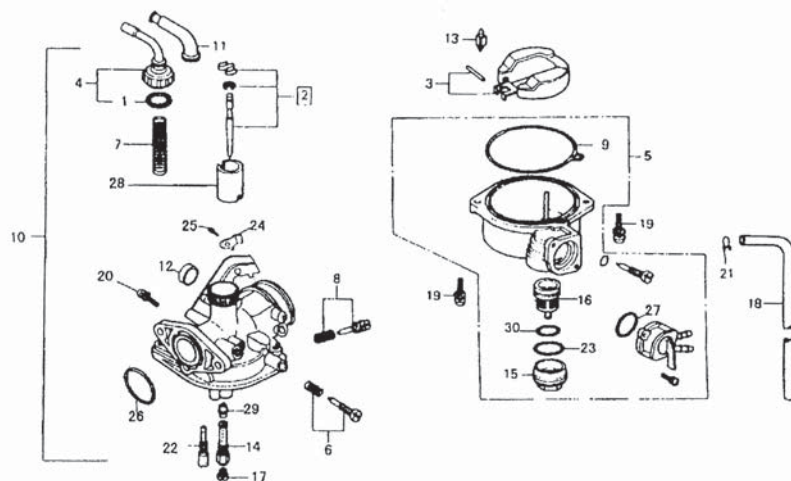
№	Код	Наименование	Кол-во
26-2	M 6 ; А50 HWMHWNn (90 ДІ)	BOLT	1
27-1	7DM28-M6 ; А60-Zn.D(50 ДІ)	BOLT	3
27-2	M 6 ; А50 HWMHWNn (90 ДІ)	BOLT	3
28-1	7DM28-M6 ; А65(50 ДІ)	BOLT	4
28-2	M 6 ; А50 HWMHWNn (90 ДІ)	BOLT	4
29	GB859-87-5-Zn.D	WASHER	3
30	702000	BUSHING ASSY	2
31-1	101006	AIR MOUTH	1
32-1	100021	SPRING	1





SkyTEAM ST50 ST90

PARTS CATALOGUE

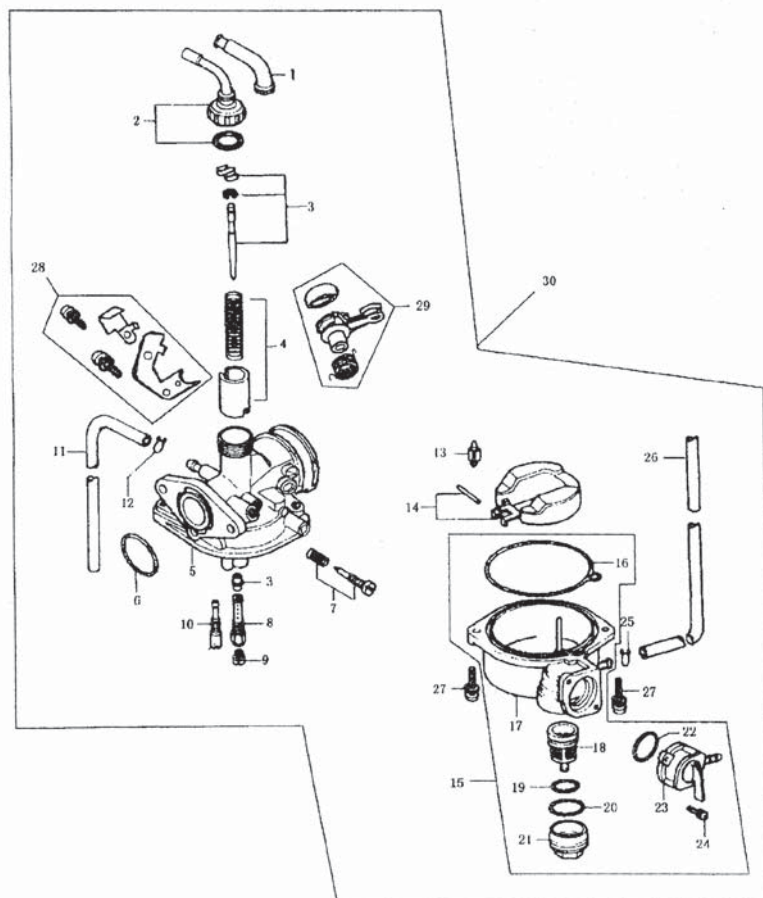


№	Код	Наименование	Код	Ед.
1	210001-J2101	GASKET SET	Аналог	1
2	210002-J2101	NEEDLE SET, JET	Аналог	1
3	210003-J2101	FLOAT SET	Аналог	1
4	210004-J2101	TOP SET	Аналог	1
5	210005-J2101	CHAMBER SET, FLOAT	Аналог	1
6	210006-J2101	SCREW SET	Аналог	1
7	210007-J2101	SPRING	Аналог	1
8	210008-J2101	SCREW SET	Аналог	1
9	210009-J2101	GASKET SET	Аналог	1
10	2100020-J2101	CARBURETOR ASSY	Аналог	1
11	2100010-J2101	CAP, CABLE SEALING	Аналог	1
12	2100011-J2101	CAP, CHOCK DUST	Аналог	1
13	2100012-J2101	VALVE COMP., FLOAT	Аналог	1
14	2100013-J2101	HOLDER, NEEDLE JET	Аналог	1
15	2100014-J2101	CUP, FUEL STRAINER	Аналог	1
16	2100015-J2101	CUP, FILTER	Аналог	1
17	2100016-J2101	JET, MAIN	Аналог	1
18	2100017-J2101	TUBE, OVER FLOW	Аналог	1
19	2100018-J2101	SCREW WASHER	Аналог	2
20	2100019-J2101	SCREW WASHER	Аналог	1
21	2100021-J2101	CLIP, TUBE	Аналог	1
22	2100022-J2101	JET, SLOW	Аналог	1
23	2100023-J2101	O-RING	Аналог	1
24	2100024-J2101	CLIP	Аналог	1
25	2100025-J2101	SCREW	Аналог	1
26	2100026-J2101	O-RING	Аналог	1
27	2100027-J2101	O-RING	Аналог	1
28	2100028-J2101	NEEDLE SET, JET	Аналог	1
29	2100029-J2101	NEEDLE SET, JET	Аналог	1
30	2100030-J2101	O-RING	Аналог	1



SKYTEAM ST50 ST90

PARTS CATALOGUE



NO	Part No	DESCRIPTION	QTY
1	13201-02E	CAP, CABLE SEALING	1
2	13210-02E	TOP SET	1
3	13220-02E	NEEDLE SET, JET	1
4	13230-02E	VALVE, SET, THROTTLE	1
5	13202-02E	SHELL	1
6	13203-02E	O-RING	1
7	13240-02E	SCREW SET	1
8	13204-02E	HOLDER, NEEDLE JET	1
9	13205-02E	JET, MAIN	1
10	13206-02E	JET, SLOW	1
11	13207-02E	RUBBER TUBE	1
12	13208-02E	CLIP	1
13	13209-02E	VALVE COMP, FLOAT	1
14	13250-02E	FLOAT SET	1
15	13260-02E	CHAMBER SET, FLOAT	1
16	13261-02E	WASHER	1
17	13262-02E	FLOAT CHAMBER	1
18	13263-02E	CUP, FILTER	1
19	13264-02E	O-RING	1
20	13265-02E	GASKET SET	1
21	13266-02E	CUP, FUEL STRAINER	1
22	13267-02E	O-RING	1
23	13268-02E	VALVE	1
24	13269-02E	SCREW	1
25	13291-02E	CLIP	1
26	13292-02E	TUBE, OVER FLOW	1
27	13293-02E	SCREW	2
28	13270-02E	CLIP COMP	1
29	13280-02E	CHOKE ARM	1
30	13200-02E	CARBURETOR ASSY	1



PARTS CATALOGUE

This diagram illustrates the exploded view of a bicycle rear shock absorber assembly. The components are numbered as follows:

- 1**: Main shock absorber body (left side).
- 2**: Upper shock absorber eye.
- 3**: Main shock absorber body (right side).
- 4**: Shock absorber mounting bracket.
- 5**: Shock absorber mounting cap.
- 6**: Shock absorber mounting plate.
- 7**: Shock absorber mounting bolt.
- 8**: Shock absorber mounting nut.
- 9**: Shock absorber mounting washer.
- 10**: Shock absorber mounting bush.
- 11**: Shock absorber mounting pin.
- 12**: Shock absorber mounting pin (bottom).
- 13**: Shock absorber mounting cap (top).
- 14**: Shock absorber mounting pin (top).
- 15**: Shock absorber mounting bush (top).

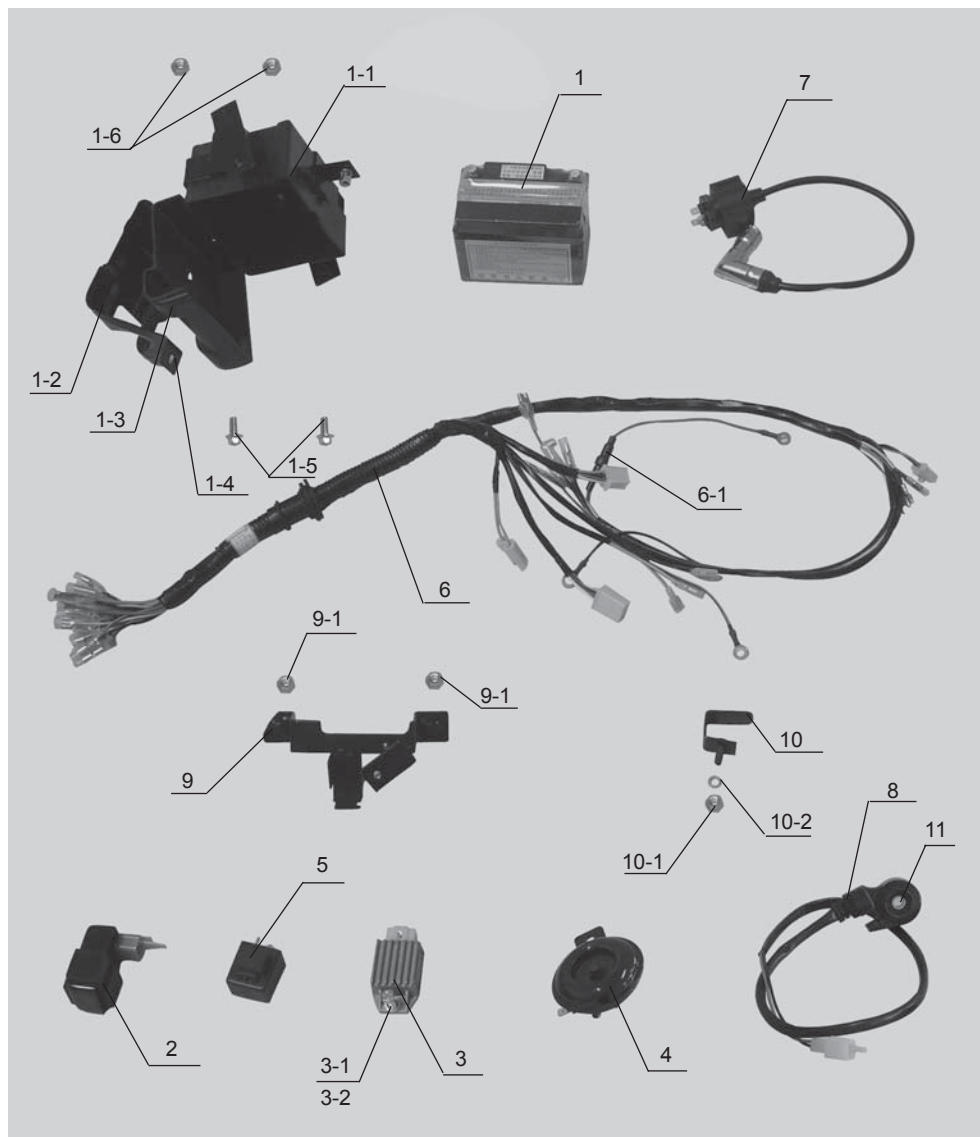


SKYTEAM

ST50 ST90

PARTS CATALOGUE

ĐỒ	Ả	CHẾ	CHẾ	Ả	ST90	ST50
1	33610-Z1000	Battery	Điện	1	i	i
1-1	33620-Z1000	Holder ASSY. battery	Điện	1	i	i
1-2	33621-Z1000	Battery Holder	Điện	1	i	i
1-3	33622-Z1000	Battery Box	Điện	1	i	i
1-4	GB6177-86 M6-Zn.DJ	Nut	Ả	1	i	i
1-5	GB5787-86 M6X12-Zn.DJ	Screw	Ả	2	i	i
1-6	GB923-86 M6-Zn.DJ	Nut	Ả	2	i	i
2	32900-E0300	CDI	CDI	1	i	i
3	32810-GD100-D	Controlled Rectifier	Điện	1	i	i
3-1	GB859-876-Zn.DB	Lock Washer	Điện	1	i	i
3-2	GB818-85 M6X20-Zn.DB	Screw	Ả	1	i	i
4	38500-Z1000	Horn ASSY	Ả	1	i	i
5	38620-C0600	Relay Winker	Ả	1	i	i
6	36610-Z1000	Wire Harness ASSY	Ả	1	i	i
6-1	36630-Z1000	Fuse(10A)	Ả (10A)	2	i	i
7	33400-Z1000	Ignition coil ASSY	Ả	1	i	i
8	42313-Y1000	Side stand switch	Ả	1	i	i
9	32830-Z1000	Holder	Ả	1	i	i
9-1	GB6177-86 M6-Zn.DB	Nut	Ả	2	i	i
10	32810-Z1000	Ignition coil Holder	Ả	1	i	i
10-1	GB6177-86 M6-Zn.DB	Nut	Ả	1	i	i
10-2	GB859-86 6-Zn.DB	Lock washer	Điện	1	i	i
11	42315-Y1000	Bolt	Ả	1	i	i



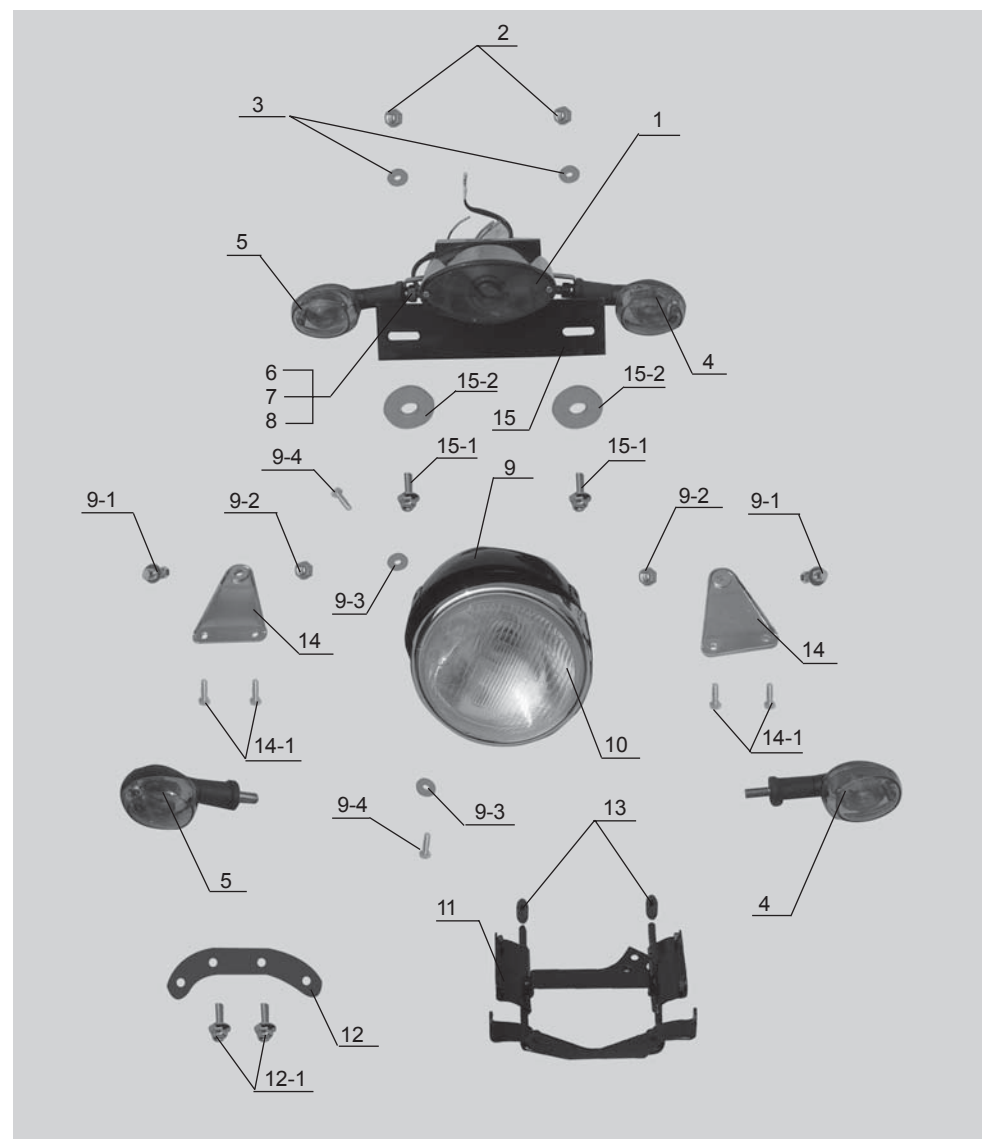


SKYTEAM

ST50 ST90

PARTS CATALOGUE

ĐỒ	Ả	CHẾ	CHẾ	Ả	ST90	ST50
1	35710-Y1000	Lamp ASSY rear combination	Ả	1	i	i
2	GB6187-86 M6-Zn.Dj	Self-locking Nut	Ả	2	i	i
3	GB96-85 6-140Hv-Zn.DJ	Washer	Ả	2	i	i
4	35601-Y1000	Lamp ASSY, RH	Ả	2	i	i
5	35602-Y1000	Lamp ASSY, LH	Ả	2	i	i
6	GB6170-86 M10X1.25-Zn.DB	Nut	Ả	4	i	i
7	GB97.1-85 10-140HV-Zn.DB	Washer	Ả	4	i	i
8	GB859-87 10-Zn.DB	Lock washer	Ả	4	i	i
9	35110-1000	Hood, meter	Ả	1	i	i
9-1	7DM27 M8X20-Cr	Bolt	Ả	2	i	i
9-2	GB6170-86 M8-Zn.DB	Nut	Ả	2	i	i
9-3	GB97.1-85 5-140HV-Zn.DH	Washer	Ả	2	i	i
9-4	GB818-86 M5X14-Zn.DH	Screw	Ả	2	i	i
10	35100-A1500	UNIT, head lamp	Ả	1	i	i
11	51511-Z1000	Bracket ASSY	Ả	1	i	i
12	46720-A1500	Plate	Ả	1	i	i
12-1	GB5787-86 M6X35-Zn.DJ	Bolt	Ả	2	i	i
13	46705-G3600	Rubber	Ả	2	i	i
14	51512-Z1000	Plate	Ả	1	i	i
14-1	7DM27 M6X14-Cr	Screw	Ả	4	i	i
15	63117-Z1000	Plate	Ả	1	i	i
15-1	GB5783-86 M6X18-Zn.DJ	Bolt	Ả	2	i	i
15-2	GB5287-86 6-140HV-Zn.DJ	Washer	Ả	2	i	i





PARTS CATALOGUE

This diagram illustrates the components of a motorcycle instrument cluster assembly. The parts are labeled with numbers and leader lines:

- 1**: Points to the right-hand speedometer.
- 2**: Points to the left-hand tachometer.
- 3**: Points to the main instrument cluster housing.
- 4**: Points to two black mounting pins.
- 5**: Points to two silver-colored mounting pins.
- 6**: Points to two small silver-colored screws.
- 7**: Points to the entire instrument cluster assembly.
- 8**: Points to a black electrical connector with a cable.
- 9**: Points to a circular lens or cover.
- 10**: Points to a small black electrical component.
- 10-1**: Points to a small silver-colored screw.
- 10-2**: Points to another small black electrical component.
- 11**: Points to a black switch or button.
- 11-1**: Points to a small silver-colored screw.



PARTS CATALOGUE

This diagram illustrates the components of a motorcycle handlebar assembly, numbered 1 through 18. The central component is the handlebar (12). At the top, three cables are shown: the upper control cable (6), the clutch cable (4), and the lower control cable (5). On the left side, the left handlebar grip (9) is shown with its mounting bracket (2) and the left handlebar switch (3). On the right side, the right handlebar grip (8) is shown with its mounting bracket (1) and the right handlebar switch (7). The handlebar is equipped with four mounting brackets (13, 14, 15, 16) and four mounting bolts (17, 18). The handlebar is also shown with two mounting brackets (11, 10) and two mounting bolts (11, 10).

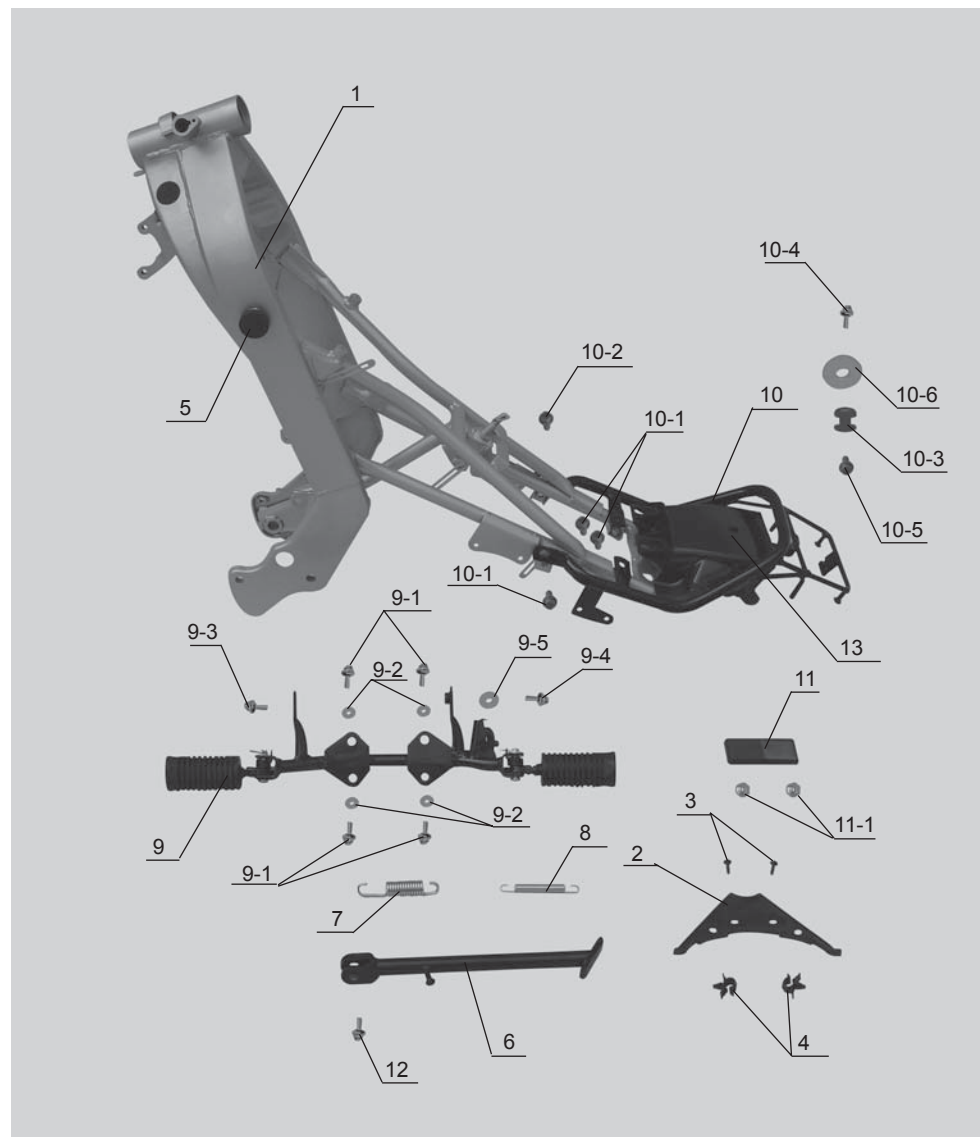


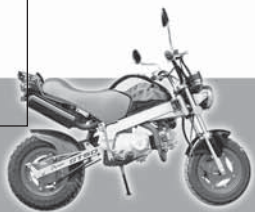
SKYTEAM

ST50 ST90

PARTS CATALOGUE

ĐỒ	Ả	CHẾ	CHẾ	Ả	ST90	ST50
1	41100-Z1000	Frame ASSY	khung	1	i	i
2	41222-Z1000	Frame cover	khung che	1	i	i
3	GB845-85 ST4.2x16-F-H-Zn.DJ	Screw	chốt vít	2	i	i
4	41220-Z1000	Cable holder	giữ cáp	2	i	i
5	46125-Z1000	Cover	miếng che	1	i	i
6	42310-Z1000	Side stand ASSY	chỗ dựa bên	1	i	i
7	42312-Z1000	Side stand spring	lò xo chỗ dựa bên	1	i	i
8	42321-Z1000	Inner spring	lò xo trong	1	i	i
9	43510-Z1000	Foot rest ASSY	chỗ dựa chân	1	i	i
9-1	GB5783-86 M8X20-Zn.DJ	Bolt	đinh	4	i	i
9-2	GB859-87 8-Zn.DJ	Lock washer	miếng khóa	4	i	i
9-3	GB5787-86 M8X20-Zn.DJ	Bolt	đinh	1	i	i
9-4	GB5787-86 M8X25-Zn.DB	Bolt	đinh	1	i	i
9-5	GB5287-86 8-140Hv-Zn.DB	Washer	miếng đệm	1	i	i
10	46110-Z1000	Rear carrier	giá đỡ sau	1	i	i
10-1	GB5787-86 M8X16-Zn.DJ	Bolt	đinh	3	i	i
10-2	GB5787-86 M8X20-Zn.DJ	Bolt	đinh	1	i	i
10-3	46123-Z1000	Rubber Pad	miếng đệm cao su	1	i	i
10-4	GB5787-86 M8X25-Zn.DJ	Bolt	đinh	1	i	i
10-5	46125-Z1000	Spacer	miếng đệm	1	i	i
10-6	GB96-858-Z/40HV-Zn.DJ	Washer	miếng đệm	1	i	i
11	38160-Y1000	Rear reflector	phản quang sau	1	i	i
11-1	GB6170-86 M5-Zn.DH	Nut	đinh	2	i	i
12	42311-Y1000	Bolt	đinh	1	i	i
13	63112-Z1000	Rear fender	chắn bùn sau	1	i	i



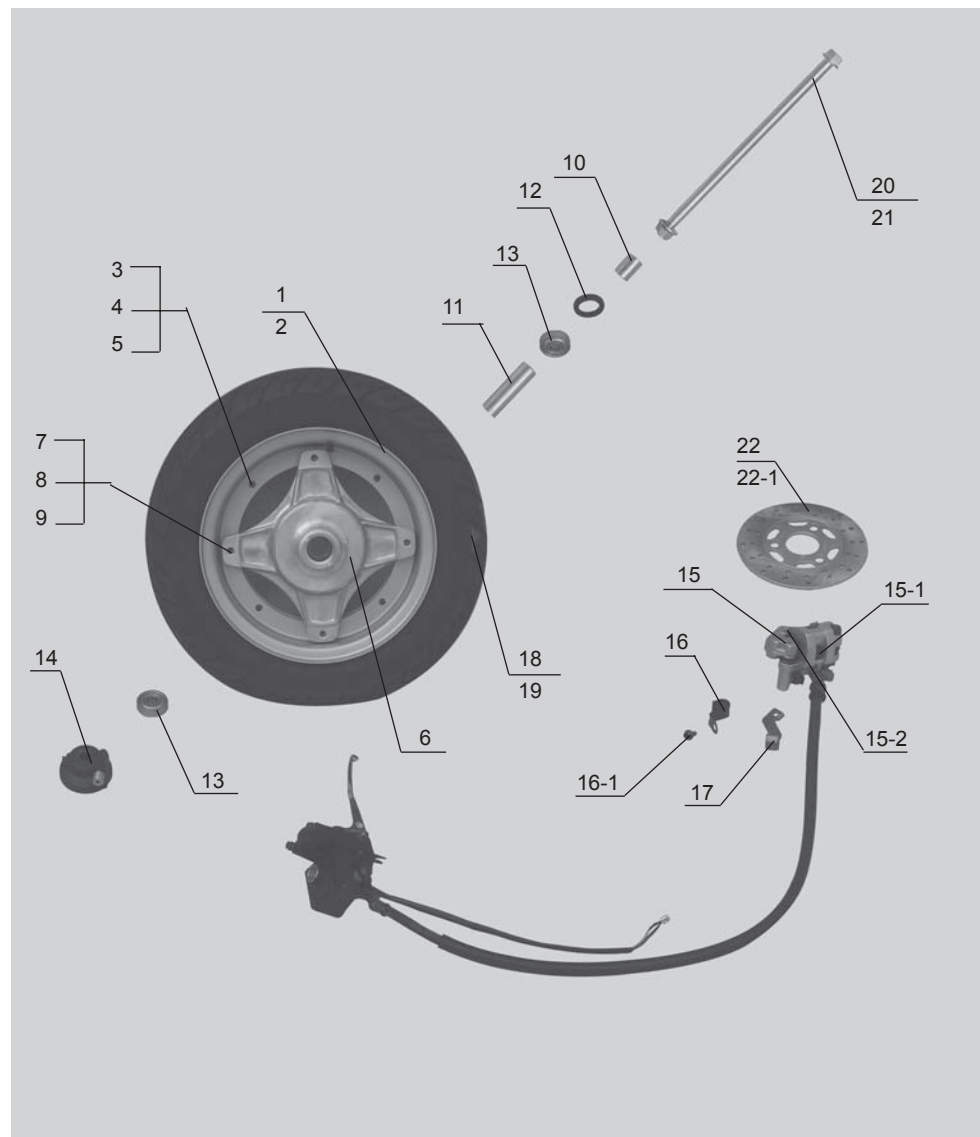


SKYTEAM

ST50 ST90

PARTS CATALOGUE

ĐỒ	Ả	CHẾ	CHẾ	Ả	ST90	ST50
1	190003	Rim, RH	Ồ	1	i	i
2	190004	Rim, LH	Ồ	1	i	i
3	GB5783-86 M6X14-Zn.DB	Bolt	Ả	4	i	i
4	GB97.1-85 6-140Hv-Zn.DB	Washer	Ả	4	i	i
5	GB6187-86 M6-Zn.DB	Nut	Ả	4	i	i
6	54111-Z1000	Drum, front hub	Ồ	1	i	i
7	GB5783-86 M8X25-Zn.DB	Bolt	Ả	4	i	i
8	GB859-87 8-Zn.DB	Lock washer	Ả	4	i	i
9	CJ70A-210221	Nut	Ả	4	i	i
10	54121-Z1000	Front wheel(L) bush	Ồ	1	i	i
11	54123-Z1000	Bushing	Ồ	1	i	i
12	09284-C0600-1	Oil seal	Ồ	1	i	i
13	60301 GB278-82	Bearing	Ồ	2	i	i
14	54600-Z1000	Speedometer clutch	Ả	1	i	i
15	59000-Z1000	Front brake ASSY	Ồ	1	i	i
15-1	59312-Z1000	Brake pad	Ả	2	i	i
15-2	GB5787-86 M8X32-Zn.DJ	Bolt	Ồ	2	i	i
16	59489-A0400	Clip	Ồ	1	i	i
16-1	GB5787-86 M6X12-Zn.DJ	Bolt	Ả	1	i	i
17	59242-A0300	Clip	Ồ	1	i	i
18	55100-Z1000	Tire	Ồ	1	i	i
19	55200-Z1000	Tube, inner	Ồ	1	i	i
20	54711-Z1000	Axle, front hub	Ồ	1	i	i
21	GB6187-86 M12X1.25-Zn.DB	Self-locking nut	Ồ	1	i	i
22	59412-Z1000	Brake disc	Ồ	1	i	i
22-1	58412-C0200	Bolt	Ồ	3	i	i





PARTS CATALOGUE

28



PARTS CATALOGUE

This exploded view diagram illustrates the components of a motorcycle seat assembly. The parts are identified by the following numbers:

- 1**: Main seat frame assembly.
- 1-1**: Front mounting bracket.
- 1-2**: Rear mounting bracket.
- 2**: Black seat cushion.
- 3**: Long metal mounting bolt.
- 4**: Washer for the mounting bolt.
- 5**: Seat backrest.
- 5-1**: Small black plastic pin.
- 5-2**: Small black plastic pin.
- 5-3**: Small black plastic pin.
- 5-4**: Washer for the backrest mounting.
- 6**: Shock absorber assembly.
- 6-1**: Small black plastic pin for the shock absorber.
- 7**: Shock absorber mounting bracket.
- 8**: Shock absorber mounting plate.
- 9**: Shock absorber mounting pin.
- 10**: Shock absorber mounting pin.
- 11**: Shock absorber mounting pin.

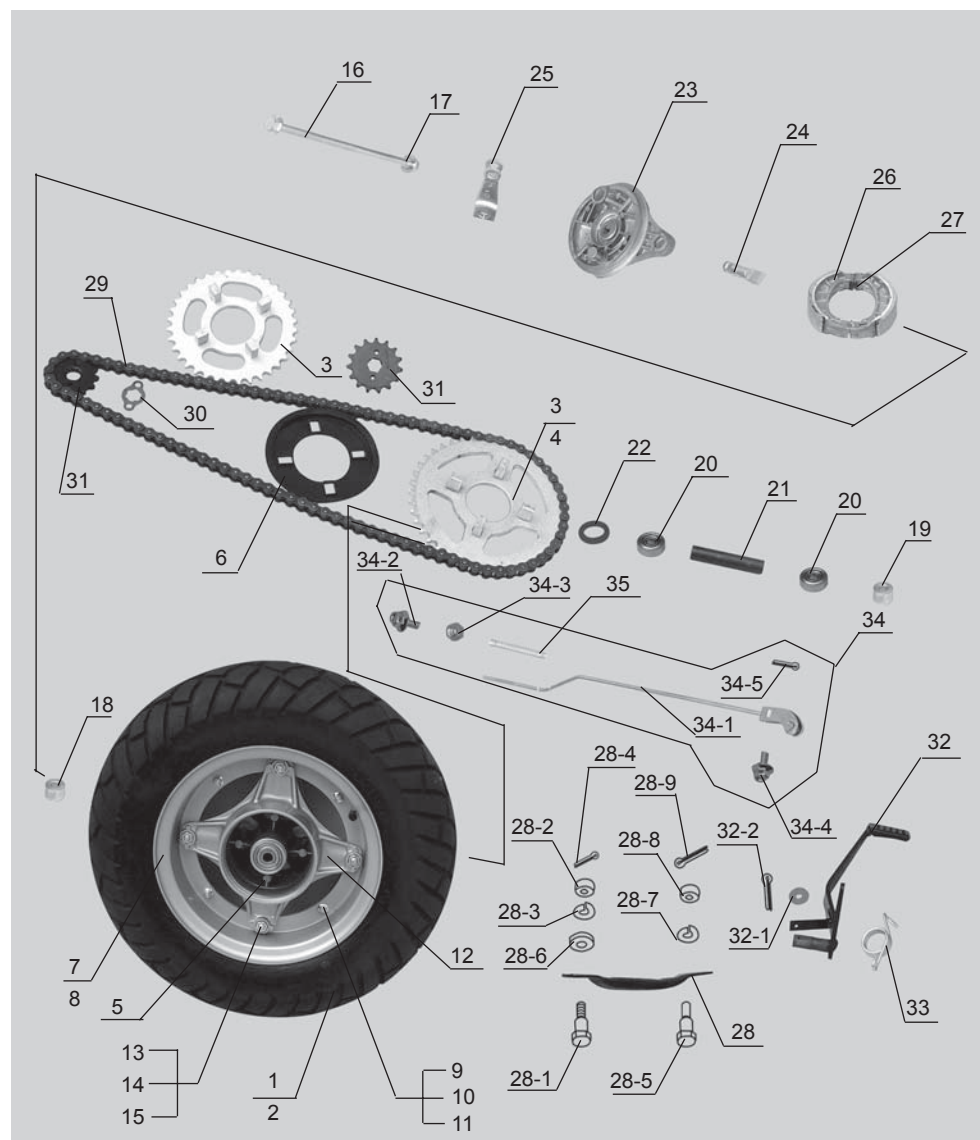


SKYTEAM

ST50 ST90

PARTS CATALOGUE

ĐỒ	Ả	CHẾ	CHẾ	Ả	ST90	ST50
1	65100-Z1000	Tire	Ả	1	i	i
2	65200-Z1000	Tube, inner	Ả	1	i	i
3	64511-A1500	Sprocket	Ả (Z=42)	1	X	i
	140200	Sprocket	Ả (Z=36)	1	i	X
4	GB894.1-86 50-Y	Thrust washer	Ả	f±	i	i
5	210214	Rubber cushion	Ả	4	i	i
6	140027	Dust cover	Ả	1	i	i
7	64142-Z1000	Rim, LH	Ả	1	i	i
8	64141-Z1000	Rim, RH	Ả	1	i	i
9	GB5783-86 M6X14Zn.DB	Bolt	Ả	4	i	i
10	GB97.1-85 6-140HVZN.DB	Washer	Ả	4	i	i
11	GB6187-86 M6-Zn.DB	Nut	Ả	4	i	i
12	210201	Drum, rear hub	Ả	1	i	i
13	GB5783-86 M8X25-Zn.DB	Bolt	Ả	4	i	i
14	CJ70A-210221	Nut	Ả	4	i	i
15	GB859-87 8-Zn.DB	Lock washer	Ả	4	i	i
16	64711-Z1000	Axle, rear	Ả	1	i	i
17	GB6187-86 M12X1.25-Zn.DB	Self-locking nut	Ả	1	i	i
18	64122-Z1000	Right spacer, rear hub	Ả	1	i	i
19	64121-Z1000	Left spacer, rear hub	Ả	1	i	i
20	60301 GB278-82	Bearing	Ả	2	i	i
21	210207	Bushing	Ả	1	i	i
22	210213	Oil seal	Ả	1	i	i
23	210202	Panel, rear hub	Ả	1	i	i
24	210206	Cam, brake	Ả	1	i	i
25	210215	Level, Cam washer	Ả	1	i	i
25-1	GB5783-86 M6X38-Zn.DJ	Bolt	Ả	1	i	i
25-2	GB6170-86 M6-Zn.DJ	Nut	Ả	1	i	i
26	CJ70A-210203	Shoe, brake	Ả	2	i	i



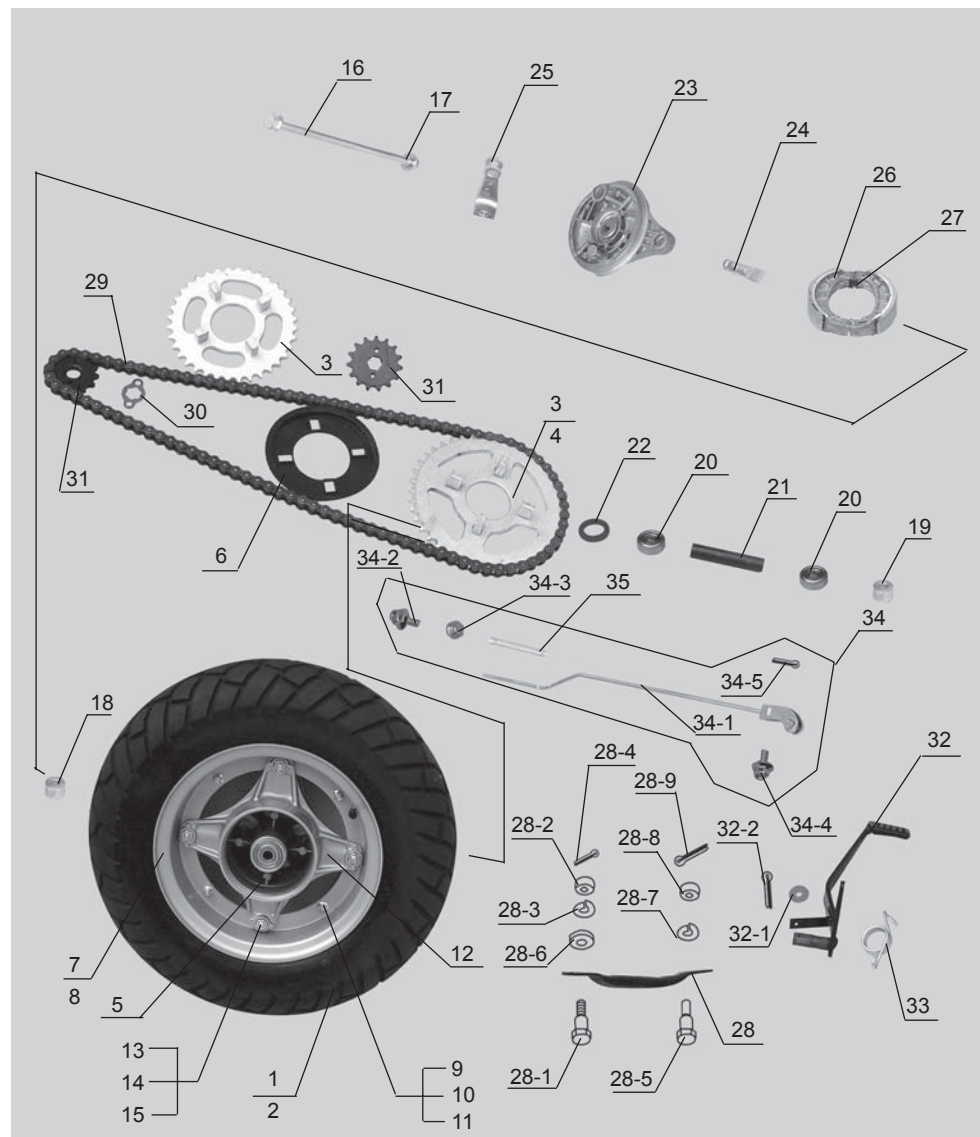


SKYTEAM

ST50 ST90

PARTS CATALOGUE

ĐD	Ả	Ả	Ả	Ả	ST90	ST50
27	210210	Spring	Ả	2	Ả	Ả
28	65310-Z1000	Pandal, brake	Ả, Ả	1	Ả	Ả
28-1	09111-08012	Bolt	Ả	1	Ả	Ả
28-2	GB6172-86 M8-Zn.DB	Nut	Ả	1	Ả	Ả
28-3	GB859-87 8-Zn.DB	Lock washer	Ả	1	Ả	Ả
28-4	GB91-86 2X20-Zn.DB	Cotter pin	Ả	1	Ả	Ả
28-5	700006	Bolt	Ả	1	Ả	Ả
28-6	GB97.1-85 8-140Hv-Zn.DJ	Washer	Ả	1	Ả	Ả
28-7	GB93-87 10-Y	Lock washer	Ả	1	Ả	Ả
28-8	GB6170-86 M8-Zn.DC	Nut	Ả	1	Ả	Ả
28-9	GB91-86 2X16-Zn.DC	Cotter pin	Ả	1	Ả	Ả
29	08MA-100 GB/T14214-93	Chain	Ả	1	X	Ả
	08MA-102 GB/T/4214-93	Chain	Ả	1	Ả	X
30	140012	Thrust washer	Ả	1	Ả	Ả
31	140011(Z=15)	Sprocket	Ả	1	Ả	X
	70-1060001(Z=13)	Sprocket	Ả	1	X	Ả
31-1	GB5783-86 M6X8-Zn.DC	Bolt	Ả	2	Ả	Ả
32	43110-Z1000	Rear brake Pandal ASSY	Ả	1	Ả	Ả
32-1	GB97.1-85 16-140Hv-Zn.DJ	Washer	Ả	1	Ả	Ả
32-2	GB91-86 3.2X26-Zn.DB	Cotter pin	Ả	1	Ả	Ả
33	43121-Z1000	Spring	Ả	1	Ả	Ả
34	43300-Z1000	Rod, brake ASSY	Ả	1	Ả	Ả
34-1	43310-Z1000	Read brake rod	Ả	1	Ả	Ả
34-2	210406	Pin	Ả	1	Ả	Ả
34-3	210405	Nut	Ả	1	Ả	Ả
34-4	43511-C0200	Pin	Ả	1	Ả	Ả
34-5	GB91-862X16-Zn.DB	Cotter pin	Ả	1	Ả	Ả
35	210401	Spring	Ả	1	Ả	Ả





PARTS CATALOGUE

Diagram illustrating the components of a helmet assembly:

- 1: Main helmet shell.
- 2: Chin strap assembly.
- 3: Buckle and strap attachment points.
- 4: Side/ear protection or communication device.



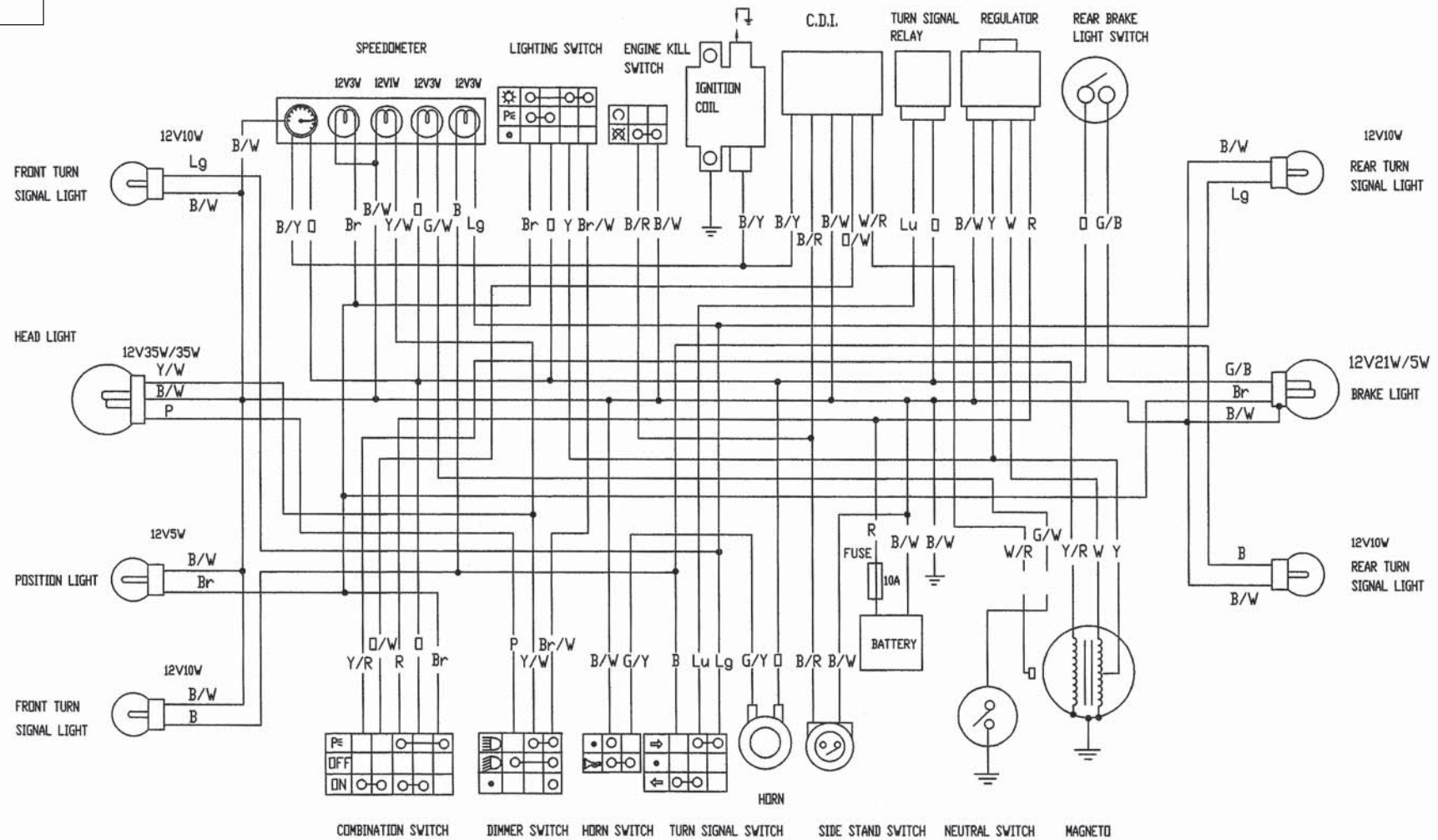


PARTS CATALOGUE

This exploded view diagram illustrates the components of a motorcycle headlight assembly. The parts are identified by the following numbers:

- 1**: The main headlight lens and housing assembly.
- 2**: The lower mounting bracket of the headlight housing.
- 3**: A small pin or clip used for mounting.
- 4**: The upper mounting bracket of the headlight housing.
- 5**: A metal mounting bracket with multiple mounting points.
- 5-1**: Two small pins or clips that attach to the mounting bracket (5).
- 6**: A black plastic or rubber mounting bracket.
- 7**: A small pin or clip used for mounting.
- 8**: A metal mounting bracket with a curved arm and a mounting point.
- 9**: A small pin or clip used for mounting.

ST50 ST90 Electrical Diagram



B	BLACK	Br	BROWN	Y/R	YELLOW WITH RED TRACER	P	PINK
B/R	BLACK WITH RED TRACER	G/Y	GREEN WITH YELLOW TRACER	O/W	ORANGE WITH WHITE TRACER	O	ORANGE
B/Y	BLACK WITH YELLOW TRACER	G/W	GREEN WITH WHITE TRACER	W/R	WHITE WITH RED TRACER	W	WHITE
B/W	BLACK WITH WHITE TRACER	G/B	GREEN WITH BLACK TRACER	Lg	LIGHT GREEN	R	RED
Br/W	BROWN WITH WHITE TRACER	Y/W	YELLOW WITH WHITE TRACER	Lu	LIGHT BLUE	Y	YELLOW